

| DATE | REVISION | BY | CHKD |
|------|----------|----|------|
| 1 | 1 | 1 | 1 |

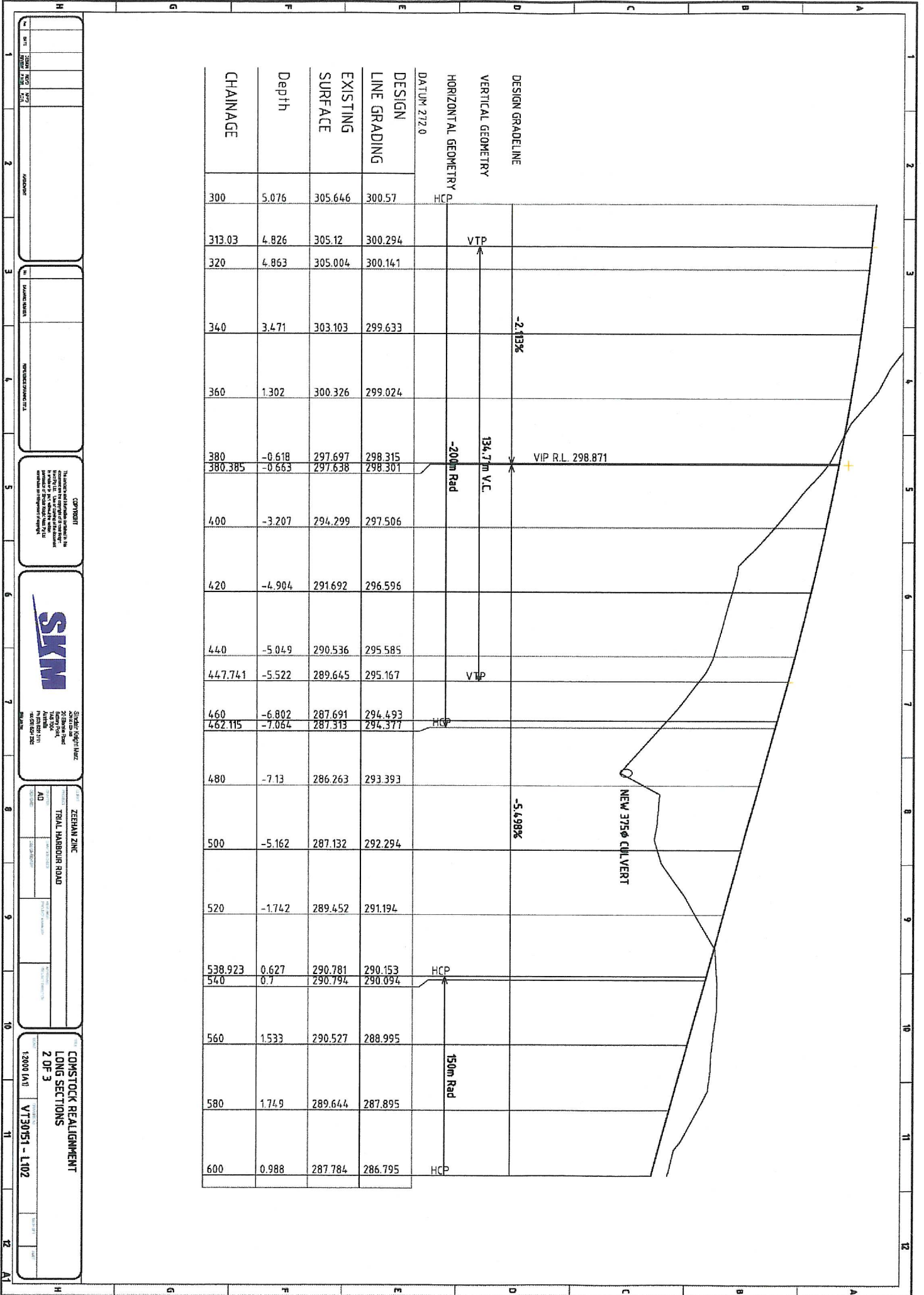
| NO. | DESCRIPTION | DATE |
|-----|-------------|------|
| 1 | 1 | 1 |

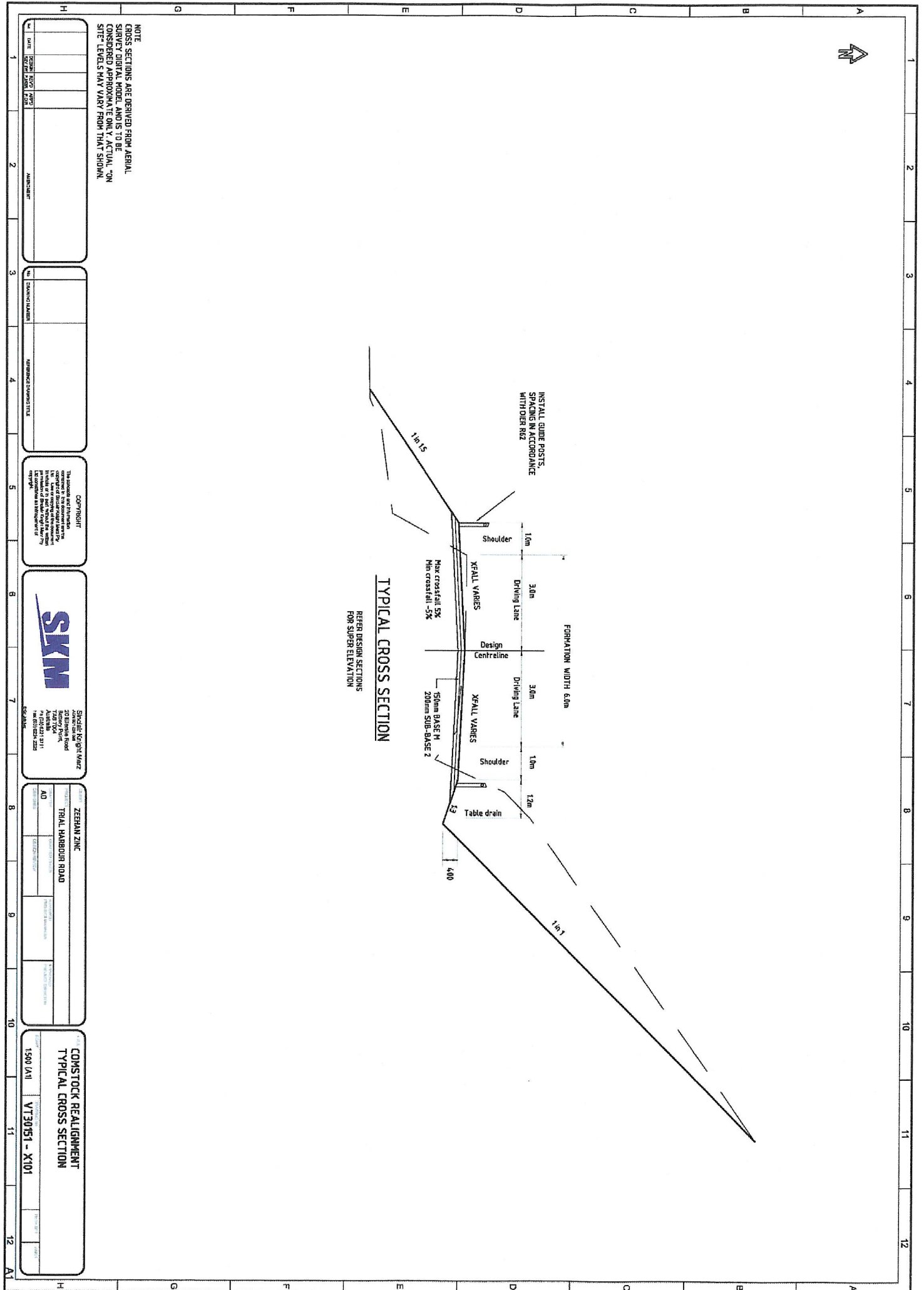
| NO. | DESCRIPTION | DATE |
|-----|-------------|------|
| 1 | 1 | 1 |

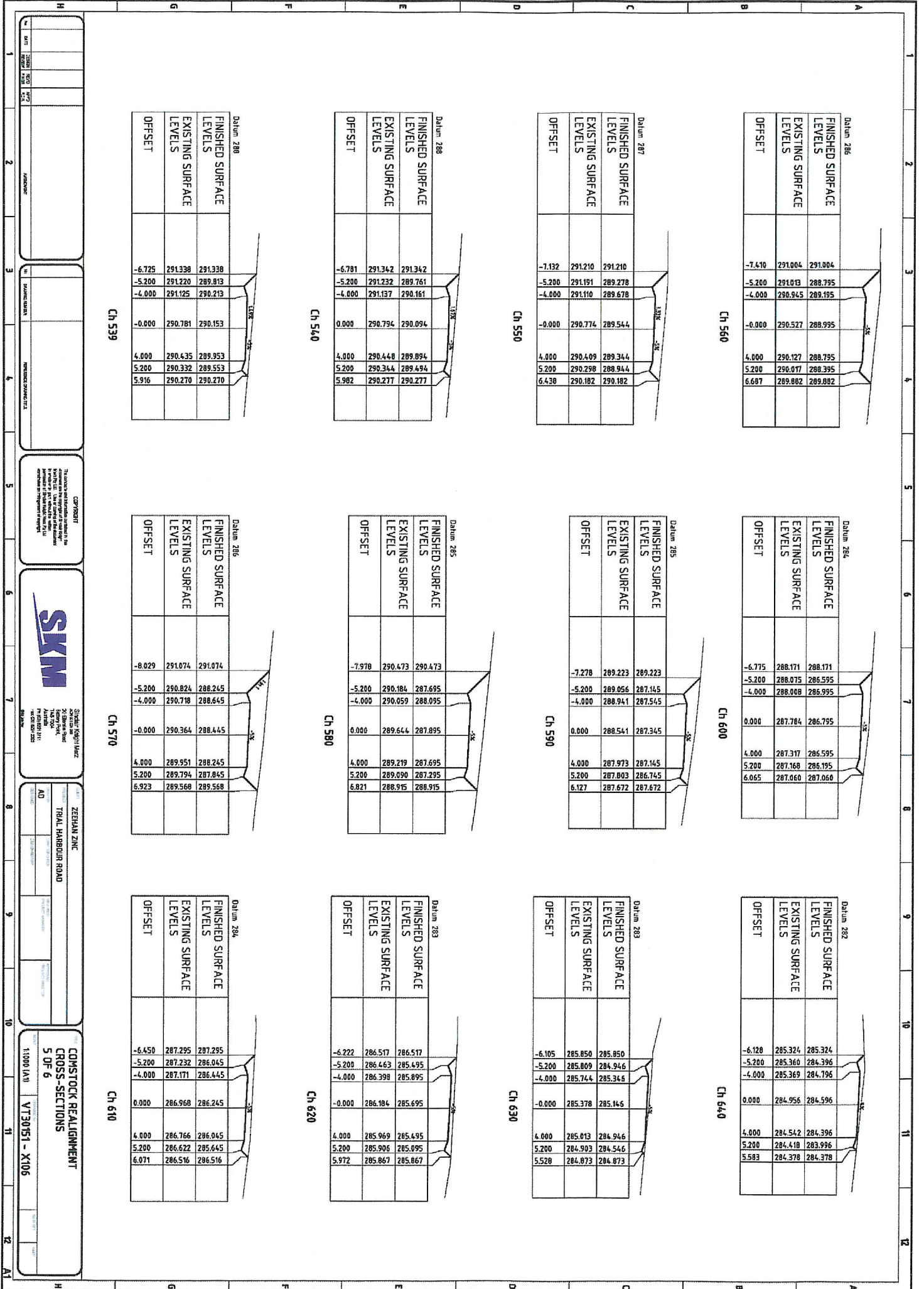
| NO. | DESCRIPTION | DATE |
|-----|-------------|------|
| 1 | 1 | 1 |

| NO. | DESCRIPTION | DATE |
|-----|-------------|------|
| 1 | 1 | 1 |

| NO. | DESCRIPTION | DATE |
|-----|-------------|------|
| 1 | 1 | 1 |







Station 280

| | | | |
|------------------|--|---------|---------|
| FINISHED SURFACE | | 287.634 | 287.634 |
| LEVELS | | | |
| EXISTING SURFACE | | 285.129 | 282.021 |
| LEVELS | | 284.098 | 282.421 |
| OFFSET | | -10.813 | -5.200 |
| | | -4.000 | -0.000 |
| | | 4.000 | 283.363 |
| | | 5.200 | 283.322 |
| | | 6.716 | 283.270 |

Ch 680

Station 280

| | | | |
|------------------|--|---------|---------|
| FINISHED SURFACE | | 287.699 | 287.699 |
| LEVELS | | | |
| EXISTING SURFACE | | 284.457 | 282.675 |
| LEVELS | | 283.714 | 283.075 |
| OFFSET | | -10.224 | -5.200 |
| | | -4.000 | -0.000 |
| | | 4.000 | 283.844 |
| | | 5.200 | 283.789 |
| | | 6.605 | 283.746 |

Ch 670

Station 281

| | | | |
|------------------|--|---------|---------|
| FINISHED SURFACE | | 284.294 | 284.294 |
| LEVELS | | | |
| EXISTING SURFACE | | 284.306 | 283.296 |
| LEVELS | | 284.320 | 283.696 |
| OFFSET | | -6.198 | -5.200 |
| | | -4.000 | -0.000 |
| | | 4.000 | 284.450 |
| | | 5.200 | 284.227 |
| | | 6.476 | 284.172 |

Ch 660

Station 282

| | | | |
|------------------|--|---------|---------|
| FINISHED SURFACE | | 284.901 | 284.901 |
| LEVELS | | | |
| EXISTING SURFACE | | 284.908 | 283.846 |
| LEVELS | | 284.915 | 284.246 |
| OFFSET | | -6.255 | -5.200 |
| | | -4.000 | -0.000 |
| | | 4.000 | 284.379 |
| | | 5.200 | 284.279 |
| | | 5.970 | 284.216 |

Ch 650

Station 273

| | | | |
|------------------|--|---------|---------|
| FINISHED SURFACE | | 277.580 | 277.580 |
| LEVELS | | | |
| EXISTING SURFACE | | 277.620 | 277.442 |
| LEVELS | | 277.976 | 277.842 |
| OFFSET | | -5.338 | -5.200 |
| | | -4.000 | -0.000 |
| | | 4.000 | 277.447 |
| | | 5.390 | 276.915 |

Ch 740

Station 277

| | | | |
|------------------|--|---------|---------|
| FINISHED SURFACE | | 281.851 | 281.851 |
| LEVELS | | | |
| EXISTING SURFACE | | 279.029 | 279.429 |
| LEVELS | | 280.865 | 279.429 |
| OFFSET | | -8.032 | -5.200 |
| | | -4.000 | -0.000 |
| | | 4.000 | 280.152 |
| | | 5.200 | 279.989 |
| | | 6.045 | 279.874 |

Ch 720

Station 279

| | | | |
|------------------|--|---------|---------|
| FINISHED SURFACE | | 285.631 | 285.631 |
| LEVELS | | | |
| EXISTING SURFACE | | 280.600 | 281.000 |
| LEVELS | | 283.593 | 281.922 |
| OFFSET | | -10.231 | -5.200 |
| | | -4.000 | -0.000 |
| | | 4.000 | 282.113 |
| | | 5.200 | 282.720 |
| | | 7.000 | 282.347 |

Ch 700

Station 279

| | | | |
|------------------|--|---------|---------|
| FINISHED SURFACE | | 281.348 | 281.348 |
| LEVELS | | | |
| EXISTING SURFACE | | 281.517 | 281.917 |
| LEVELS | | 283.874 | 281.899 |
| OFFSET | | -11.031 | -5.200 |
| | | -4.000 | -0.000 |
| | | 4.000 | 282.985 |
| | | 5.200 | 283.463 |
| | | 7.437 | 283.537 |

Ch 687

Station 270

| | | | |
|------------------|--|---------|---------|
| FINISHED SURFACE | | 272.711 | 272.711 |
| LEVELS | | | |
| EXISTING SURFACE | | 272.705 | 272.999 |
| LEVELS | | 272.668 | 273.199 |
| OFFSET | | -4.732 | -4.000 |
| | | -0.000 | 0.000 |
| | | 4.000 | 272.441 |
| | | 4.990 | 272.339 |

Ch 793

Station 270

| | | | |
|------------------|--|---------|---------|
| FINISHED SURFACE | | 272.374 | 272.374 |
| LEVELS | | | |
| EXISTING SURFACE | | 274.221 | 274.421 |
| LEVELS | | 273.138 | 273.488 |
| OFFSET | | -6.771 | -4.000 |
| | | -0.000 | 0.000 |
| | | 4.000 | 273.422 |
| | | 5.507 | 273.217 |

Ch 780

Station 270

| | | | |
|------------------|--|---------|---------|
| FINISHED SURFACE | | 272.577 | 272.577 |
| LEVELS | | | |
| EXISTING SURFACE | | 276.104 | 276.304 |
| LEVELS | | 274.475 | 275.100 |
| OFFSET | | -9.291 | -4.000 |
| | | -0.000 | 0.000 |
| | | 4.000 | 274.870 |
| | | 8.249 | 273.272 |

Ch 760

| | | | | | | | | | | | |
|--|-------|-------|-------|-------|-------|-------|-------|-------|--------|--------|--------|
| NO. 1 | NO. 2 | NO. 3 | NO. 4 | NO. 5 | NO. 6 | NO. 7 | NO. 8 | NO. 9 | NO. 10 | NO. 11 | NO. 12 |
| 1 | 2 | 3 | 4 | 5 | 6 | 7 | 8 | 9 | 10 | 11 | 12 |
| <p>CONSTRUCTION</p> <p>1. All work shall be in accordance with the latest edition of the Standard Specifications for Highway Construction, as published by the Department of Transportation, and the latest edition of the Standard Specifications for Highway Construction, as published by the Department of Transportation.</p> <p>SKM</p> <p>SKM Engineering, Inc. 10000 N. 10th Ave., Suite 100 Denver, CO 80231 Tel: 303.751.1000 Fax: 303.751.1001 www.skmeng.com</p> <p>CONSTRUCTION</p> <p>1. All work shall be in accordance with the latest edition of the Standard Specifications for Highway Construction, as published by the Department of Transportation, and the latest edition of the Standard Specifications for Highway Construction, as published by the Department of Transportation.</p> <p>CONSTRUCTION</p> <p>1. All work shall be in accordance with the latest edition of the Standard Specifications for Highway Construction, as published by the Department of Transportation, and the latest edition of the Standard Specifications for Highway Construction, as published by the Department of Transportation.</p> | | | | | | | | | | | |